

**125VDC 100A**

**Modular DC Charger (DC Panel)**

For a local factory in Colombia



More flexible



More reliable



More affordable

**Location: Colombia/2023**

## Custom design highlights

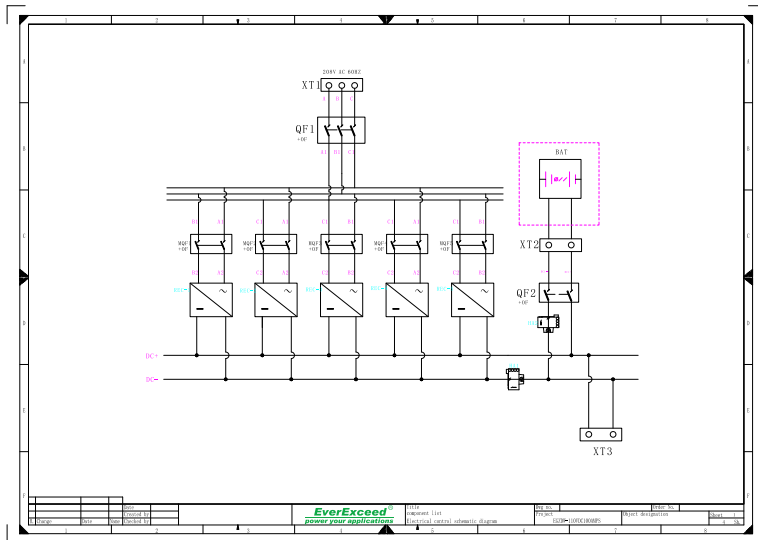
Here we are going to introduce Colombia a local factory project with customized the 125VDC 100A EGZDW series DC Panel. This project is to provide power for control, power loads as well as DC accidental lighting loads, and was also one of the bases for contemporary power system control and protection. The DC power system mainly consists of one customized cabinet, five 110V20A rectifier modules, one monitoring module, power distribution part, rectifier, battery, etc. It perfectly matches the parameters of the rectifier-charger in the factory and meets the limited installation space requirements. The reliability and safety of DC Panel have a direct impact on the reliability and safety of the power supply of the power system, therefore EverExceed customized this DC panel based on engineering requirements, which was more flexible, more reliable and more affordable.

## Custom design highlights

- ◆ **1. More flexible:** With custom designed cabinet, 7-inch touch screen, it can monitor and display the operating status and parameters of various equipment;
- ◆ **2. More reliable:** Configure the control switch of each rectifier module to effectively protect the circuit;
- ◆ **3. More affordable:** With remote control, remote adjustment, telemetry, telecommunication functions and remote communication interface. Through the remote communication interface, the operating parameters of DC power supply system can be obtained in the remote place, and the operating status and fixed value can be set and modified through this interface to meet the requirements of power automation; equipped with standard RS232/485 serial interface, it can be conveniently incorporated into the automation system.



## Customized system chart



## General specification:

Model	EGZDW 110VDC 100A
Input Voltage	208V AC 60HZ
Number of rectifier modules	5
Current for each rectifier module	20A
Output Voltage	125V DC
Output Current	100A
IP class	IP31
Color	RAL 7035

## Features:

- ◆ **High Reliability:**
- ◆ Modular design with switching power supply.
- ◆ The charging module: optional electric heating plug-in type, average maintenance time decreases significantly.
- ◆ Hardware low difference and autonomous equity technology, Maximum output current imbalance between modules is better than 5%.
- ◆ Panel indication: Intelligent touch screen, alarm indicator (charger fault alarm indication, AC power alarm indication), operation indication, power indication, DC voltmeter, DC ammeter.
- ◆ **High intelligence:**
- ◆ Large LCD display with audible and visual alarm.
- ◆ Smart monitoring module: smooth adjustment of output voltage and current.
- ◆ support "remote control, remote adjustment, telemetry, telecommunication" of the power system, realizing unattended operation.
- ◆ Adopts the unique "one line through" wiring technology, convenient for users to maintain.
- ◆ Adopts naturally cooled charging module to withdraw relatively harsh environment ;
- ◆ Ultra-high power densification, saving system space and improving system capacity.
- ◆ Intelligent communication provides R S 2 3 2 / R S 4 8 5 (optional RTU / CDT / MODBUS / IEC61850 communication protocol).



**EverExceed | A global leading manufacturer of customized industrial battery charger.**



EverExceed | Empower, Energize, Exceed  
the Energy you Expect forever.

[www.everexceed.com](http://www.everexceed.com)



Headquarter:  
**Shenzhen EverExceed Industrial Co., Ltd**

Section A, Floor 19, Senhainuo Kechuang Building,  
DeZhengRoad No.5, Shilong Community, Shiyan,  
Bao'an District, Shenzhen, China

[www.everexceed.com](http://www.everexceed.com)

[marketing@everexceed.com](mailto:marketing@everexceed.com)

Branch Company:

**EverExceed International Company Limited (HK)**

19H Maxgrand Plaza No3 Tai Yau St San PO Kong KLN Hongkong  
[info@everexceed.com](mailto:info@everexceed.com)

**EVEREXCEED INTERNATIONAL (UK) LIMITED**

63-66 HATTON GARDEN FIFTH FLOOR, SUITE23 LONGDON  
UNITED KINGDOM

[Europe@everexceed.com](mailto:Europe@everexceed.com)